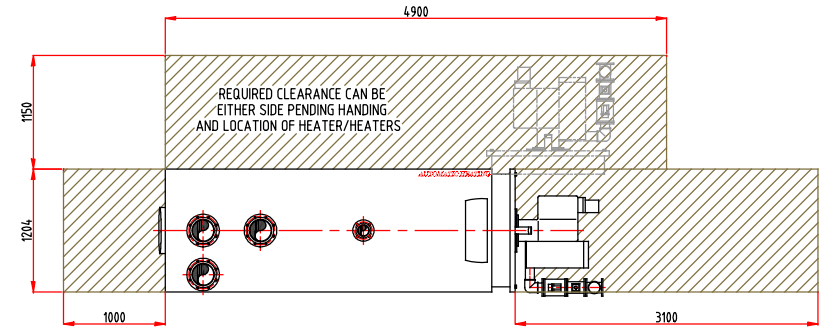
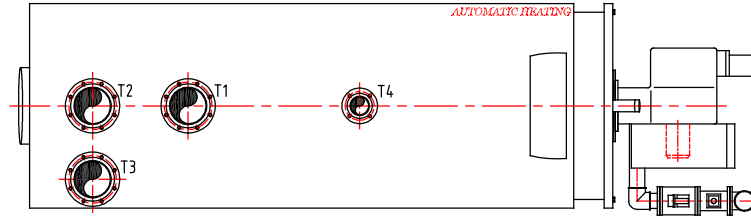


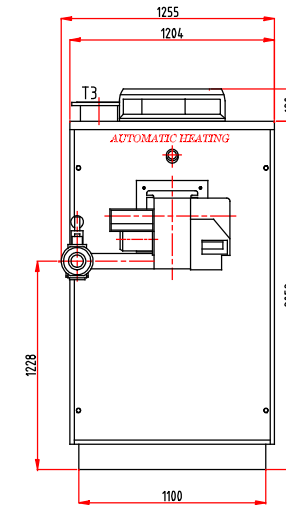
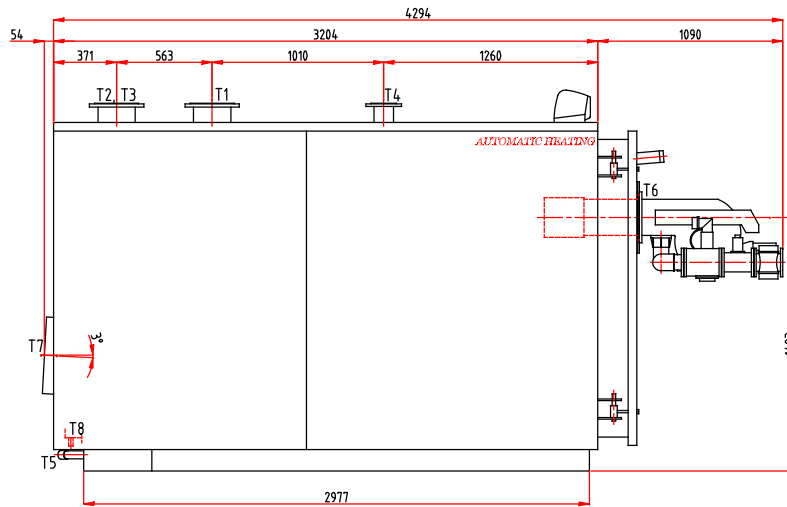
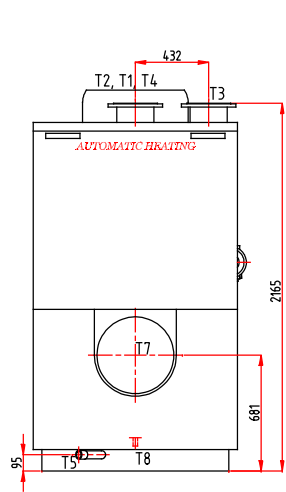
DIMENSIONS ARE CORRECT AT TIME OF PRINTING AND MAY ALTER WITHOUT PRIOR NOTIFICATION

PORT SCHEDULE

| PORTS | SIZE | DESCRIPTION |
|-------|-----------|------------------------|
| T1 | DN200 PN6 | C.H. FLOW |
| T2 | DN200 PN6 | LOW TEMP C.H. RETURN |
| T3 | DN200 PN6 | HIGH TEMP C.H. RETURN |
| T4 | DN100 PN6 | EXPANSION VESSEL CONN. |
| T5 | RP 1-1/2 | BOILER DRAIN |
| T6 | φ320 | BURNER PLATE |
| T7 | φ452 | FLUE |
| T8 | φ40 | CONDENSATE DRAIN |



BOILER CLEARANCE
NOT TO SCALE



| | | | | | | | | | | |
|----------------|------|-----------------|-----|-----------|------------------------------------|---|--|-------------|------------|------|
| | | NAME: G.ROBERTS | | CLIENT: | | AUTOMATIC HEATING PTY LTD | | SIZE | DRG No. | REV. |
| | | DATE: 07/09/13 | | | | 67 GATEWAY BOULEVARD | | A3 | K-2160-B92 | A |
| ORIGINAL ISSUE | G.R. | 07/09/13 | A | APP: | TITLE: EUROGEN BOILER MODEL K-2160 | EPPING, VICTORIA 3076 AUSTRALIA | | | | |
| MODIFICATION | NAME | DATE | REV | QUOTE No. | C/W GS92 BURNER | Phone : +61 3 9330 3300 Fax : +61 3 9310 5655 | | SCALE: 1:30 | | |